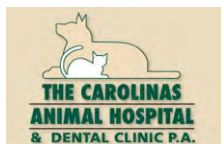


ROOT CANAL THERAPY

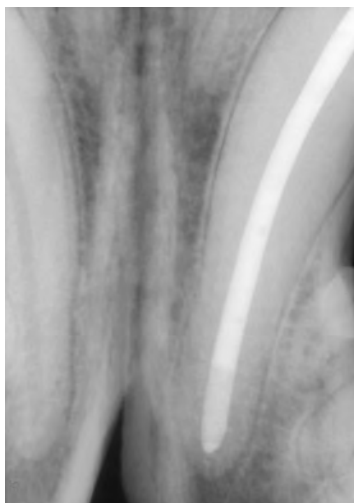


THE CAROLINAS ANIMAL HOSPITAL AND DENTAL CLINIC

When a tooth is fractured into the pulp canal, the nerve and blood supply are exposed. The **exposed nerve is very painful** despite a pet's inability to communicate that pain. With the exposure of the pulp canal to the normal bacteria in the mouth, **the tooth is at risk for infection.**



Fractured canine tooth with pulp exposed



X-ray after root canal



After root canal and composite restoration

There are many benefits to root canal therapy vs. extraction of a fractured tooth. When a root canal procedure is performed, the inside of the tooth (blood and nerve supply) is removed and filled with a material called gutta percha, thus eliminating infection and pain. In contrast, extraction is a surgical procedure thereby more traumatic and painful than having a root canal performed. The tooth structure also remains intact with a root canal, so the patient can continue to use the tooth for chewing. After a root canal, the opening into the tooth is sealed with a tooth colored composite (similar to bonding). Oftentimes, we will also prepare the tooth for a crown to further protect the tooth.