

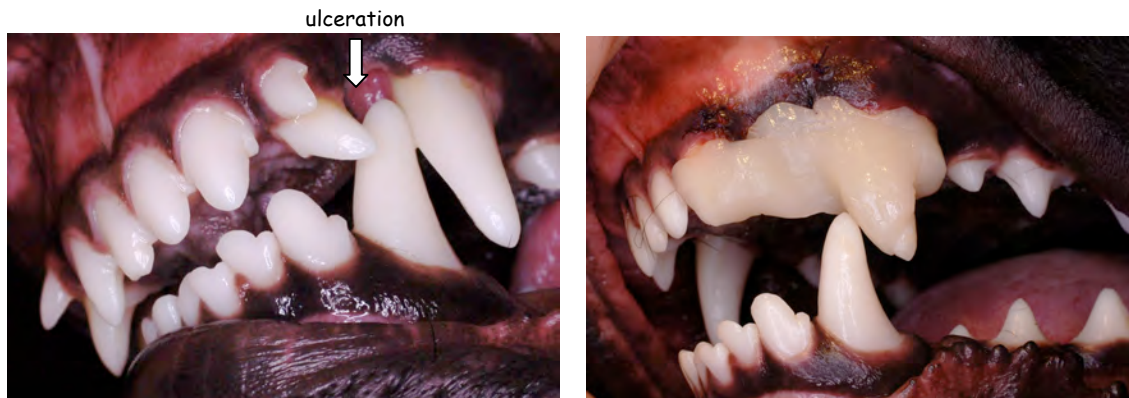


INCLINE PLANE

THE CAROLINAS ANIMAL HOSPITAL & DENTAL CLINIC

Sometimes dogs and cats are born with an improper bite or jaw alignment. This is a problem if it causes their teeth to improperly strike other teeth or tissues in their mouth. Left untreated, this can cause immense **PAIN** and **INFECTION**. However, there are procedures we are able to perform in order to restore a healthy and comfortable oral cavity.

One way we are able to move lower canine teeth that are improperly positioned is with a device called an **INCLINE PLANE**. This is an orthodontic device made out of acrylic constructed in a patient's mouth while anesthetized. A groove is made in the acrylic in order to direct the tooth into a more comfortable position.



It is typical for a patient to wear an incline plane for about 8 weeks in order to allow the tooth to be repositioned. During this time home care is essential to keep the incline plane clean and intact. Daily rinses or brushing are necessary. It is also possible for a dog or cat to remove the device with their paws or improper chewing, so it is *essential* to modify a pet's chew toys and watch them closely for undesirable behavior.

We will recheck our patient's oral cavity several times while they wear the incline plane in order to verify proper tooth movement. Once it is time to remove the incline plane, it is necessary to anesthetize the patient for a very short time to ensure safe removal of the device.

The **BENEFITS** of the incline plane procedure vs. a **CROWN REDUCTION AND VITAL PULPOTOMY** is that after the incline plane is removed, the teeth are intact and have not required endodontic care.