

Ada is a one-year-old German Shepherd who came to The Carolinas Animal Hospital and Dental Clinic six months ago for treatment of a brachygnathic (short) mandible. Her jaw was abnormally short, causing the mandibular canines to strike the palate and create deep sores. Left untreated, these areas become painful and often progress to oronasal fistulas.





Figure 1: Before Crown Reduction



Figure 2: After Crown Reduction and Vital Pulp Treatment

We relieved her painful bite by shortening the crowns of the mandibular canine teeth and performing vital pulpotomy therapy on each of them (Figures 1 and 2). 8mm of pulp was removed with a sterile bur, pulpal medicament was placed on top of the pulp (to keep the teeth alive and functional), and the teeth finished with a composite restoration.

Ada's six-month post-op radiographs verified her teeth were alive and maturing as planned. X-rays confirmed that the mandibular canines had continued to form dentin leading to narrower pulp canals, closure of the tooth root tips, and the presence of a dentinal bridge in the coronal portion of each tooth (Figure 3). However, the composite filling was missing from her right mandibular canine tooth. After removing debris, an endodontic file was placed in the canal to confirm the durability of the dentinal bridge (Figure 4 - lateral view). The composite restoration was replaced, and Ada was scheduled to return for dental radiographs in six months.



Figure 3: Six-month Post Op – Dentinal Bridge Formation, Root Tip Closure

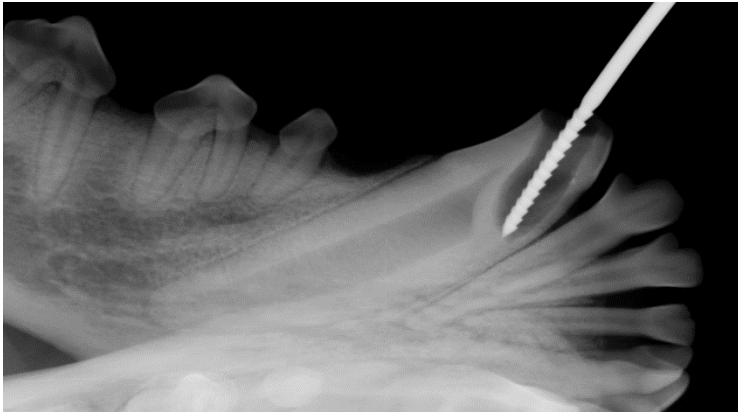


Figure 4: Six-month Post-op - Lateral view of Dentintal Bridge Formation