

A 5 year old FS Shih Tzu presented for evaluation of a maxillary fourth premolar slab fracture. So you might ask... why are these photos and x-rays not of the 4th premolar?? We routinely perform full mouth dental radiographs on all dental patients and this case highlights the importance of those x-rays. Notice the missing mandibular right 1st premolar in the photo (figure 1). Missing teeth are a major indication for dental radiography. What do you think of the corresponding x-ray of the right mandible (figure 2)?

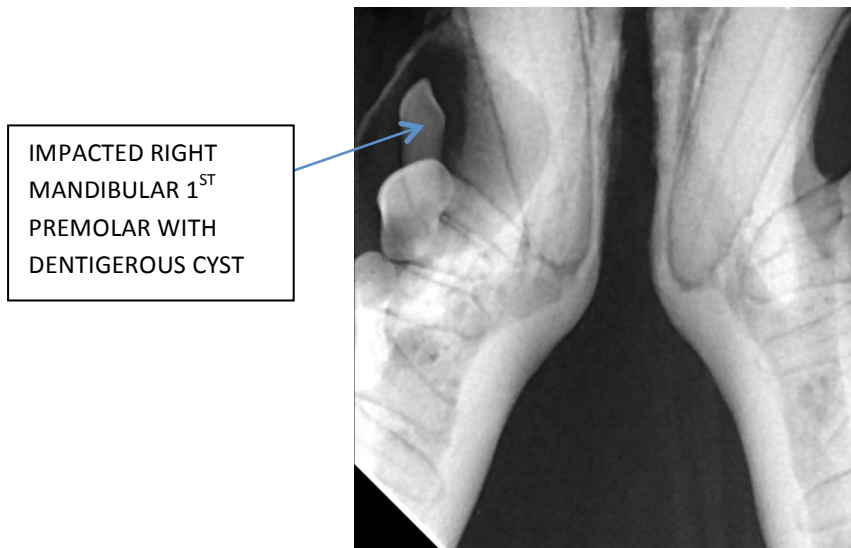


FIGURE 1



FIGURE 2

(This is to be on the next part of the newsletter that they click on):



If you answered “THIS DOG HAS A DENTIGEROUS CYST!” then you are absolutely correct. Notice the impacted tooth within the cyst. Treatment involved creating a gingival flap, removing the impacted tooth and any other teeth lacking proper periodontal support as a result of alveolar bone destruction, and thorough removal of the entire cystic lining (figures 3-4).

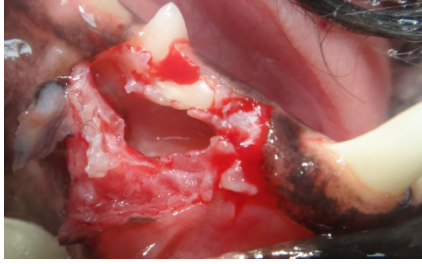


FIGURE 3



FIGURE 4

The site was filled with a bone grafting material and the gingiva was sutured prior to taking a final post-op x-ray. The cystic lining was also sent for histopathology and the diagnosis was confirmed to be dentigerous cyst.

